



FedACH[®] SameDay Service

Technical Reference Guide

FedACH SameDay Service

Technical Reference Guide

Table of Contents

Service Description	Page 3
Schedule for Adding, Changing, and Retrieving Participant Information	Page 4
Forward – Transmission, Delivery, and Settlement Schedule	Page 5
Return – Transmission, Delivery, and Settlement Schedule	Page 6
Participant Roles and RDFI Participant Types	Page 7
Participant Groups and Members – Example	Page 8
Unilateral/Multilateral Relationships – Example	Page 9
Master Participant List Data Structure	Page 11
Master Participant List Specification	Page 12
Master Participant Pair List Specification	Page 13
Logic for Identifying FedACH SameDay Service Forward Payments	Page 14
Logic for Identifying FedACH SameDay Service Return Payments	Page 15
Output Files to Receiving Points	Page 16
Output File Containing FedACH SameDay Service Forward Payments	Page 17
Output File Containing FedACH SameDay Service Return Payments	Page 18
Settlement Advice Tran Codes for FedACH SameDay Service.....	Page 20
Account Holder – Immediate (Same-Day) Settlement Advice	Page 21
Account Holder – FedACH SameDay Service Return Settlement Advice	Page 22
Correspondent/Master Account – Immediate (Same-Day) Settlement Advice	Page 23
Correspondent/Master Account – FedACH SameDay Service Return Settlement Advice	Page 24
Respondent/Subaccount – Immediate (Same-Day) Settlement Advice	Page 25
Respondent/Subaccount – FedACH SameDay Service Return Settlement Advice	Page 26
FedACH SameDay Service Time Extension Practice	Page 27
Events that would cause the FedACH SameDay Service Participant List to become Stale	Page 28
FedACH SameDay Service Fee Schedule	Page 30

Service Description

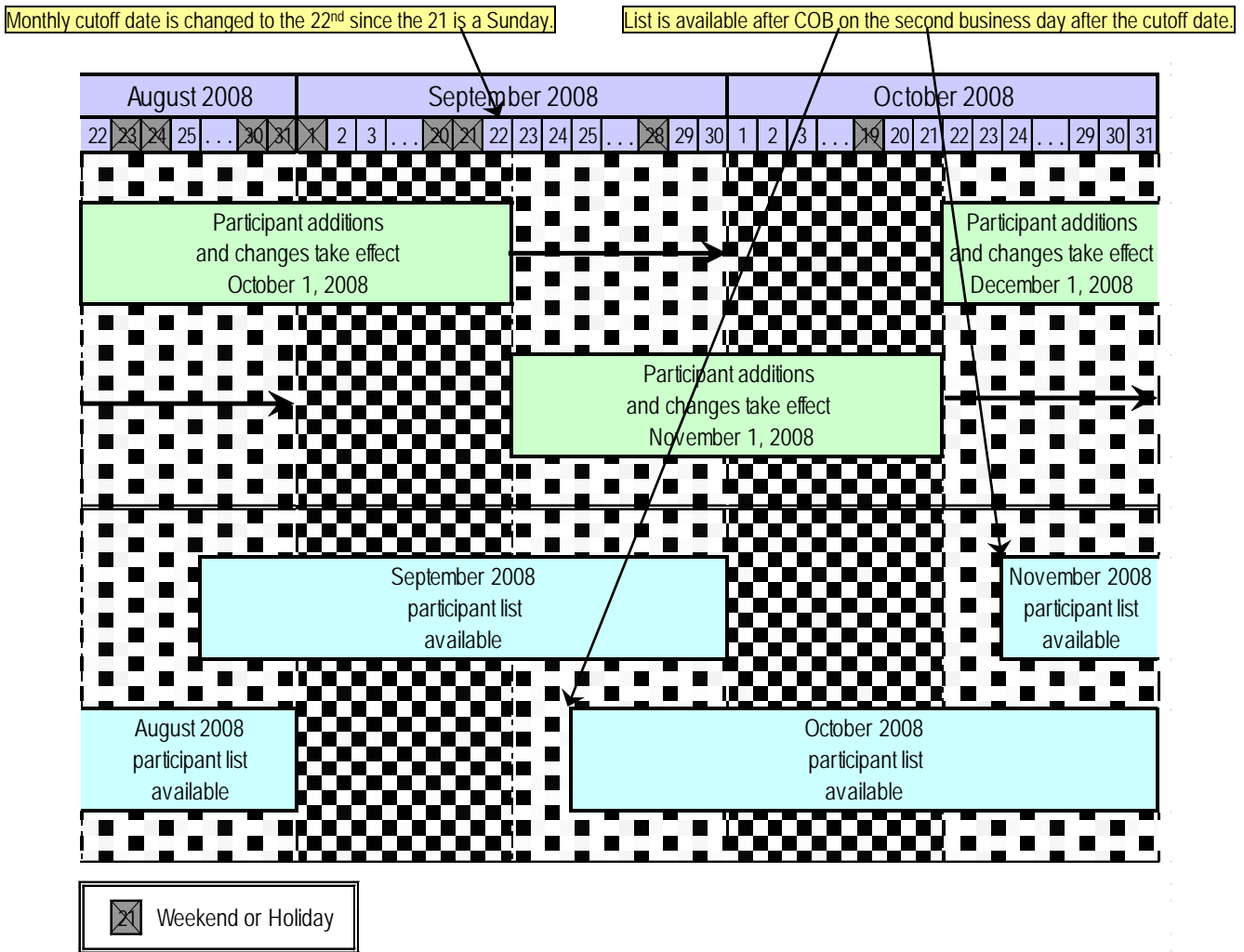
- FedACH SameDay Service forward deadlines
 - 2:00 p.m. ET input file from ODFI
 - 4:00 p.m. ET output file to RDFI
 - 5:00 p.m. ET settlement of forward payments
- FedACH SameDay Service return deadlines
 - 4:30 p.m. ET input from returning DFI
 - 5:00 p.m. ET output to receiving DFI
 - 5:30 p.m. ET settlement of returned payments
- FedACH SameDay Service is an opt-in, by agreement service that is available to any FedACH customer.
- FedACH SameDay Service participants choose to be an RDFI-only, an ODFI-only, or both an RDFI and ODFI for forward payments.
- RDFI may elect to be either a multilateral or unilateral participant.
 - RDFI multilateral participants allow receipt of same-day payments from all ODFI RTN participants.
 - RDFI unilateral participants allow receipt of same-day payments from one or more ODFI RTN participants; RDFI specifies ODFI RTN(s) in FedACH Participation Agreement.
- ODFI participants are allowed to originate same-day payments to all RDFI RTN participants agreeing to accept such payments.
- First phase of FedACH SameDay Service is debit payments limited to ARC, BOC, POP, RCK, TEL, and WEB.
- FedACH SameDay Service is limited to origination of commercial payments.
- Payments not eligible for the FedACH SameDay Service will settle next day.
- FedACH SameDay Service and next-day forward payments can be included in the same ACH file.
- FedACH SameDay Service does not require any non-standard use of NACHA file, record, or field formats. The requested settlement date will continue to be based on the *Effective Entry Date Field* in the *Company/Batch Header Record*.
- ACH interoperator same-day payments not supported.

Schedule for Adding, Changing, and Retrieving Participant Information

The following shows the monthly schedule for ODFIs and RDFIs to opt-in or opt-out for FedACH SameDay Service. The schedule also applies to RDFI unilateral participants that add or remove ODFI participants. Participant agreement additions or changes are accepted from the 22nd of the month to the 21st of the following month. Participant changes are applied at the beginning of the next month following the monthly cutoff date of the 21st. A DFI may only opt-in on a monthly cycle. Though not encouraged, a DFI may, if it insists, opt-out outside the monthly cycle.

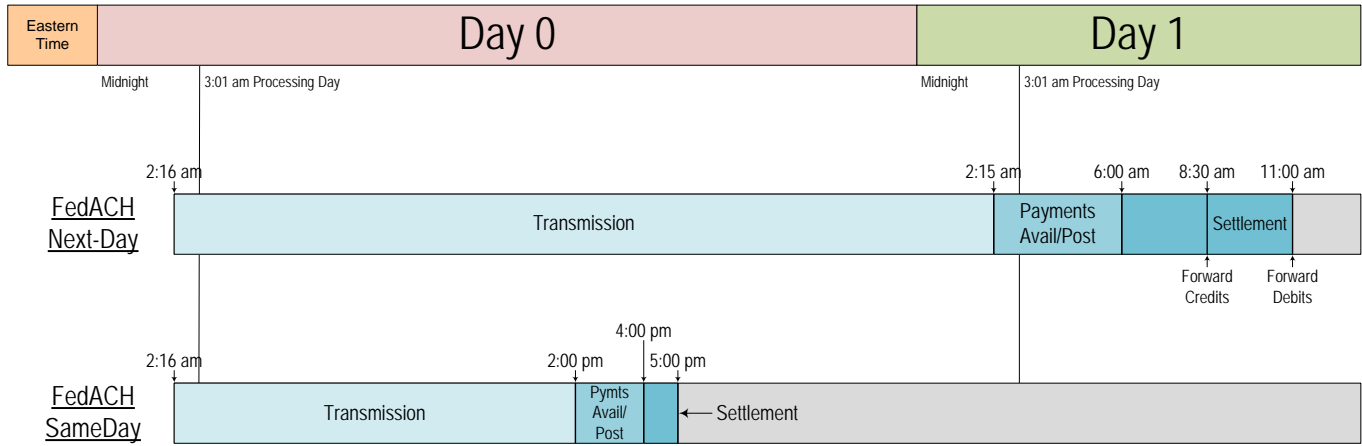
ODFI and RDFI participants will have access to the current month and next month participant list as shown. The following month participant list will be available after the close of business on the 23rd of the current month. After the close of business on the 23rd of the month to the end of the month, participants will continue to use the participant list for the current month.

If the 21st of the month falls on a weekend or standard Reserve Bank holiday, the next business day will be used as the monthly cutoff date for making service changes. If the cutoff date is changed, access to next month's participant list will be available after the close of business on the second business day after the cutoff date.



Forward – Transmission, Delivery, and Settlement Schedule

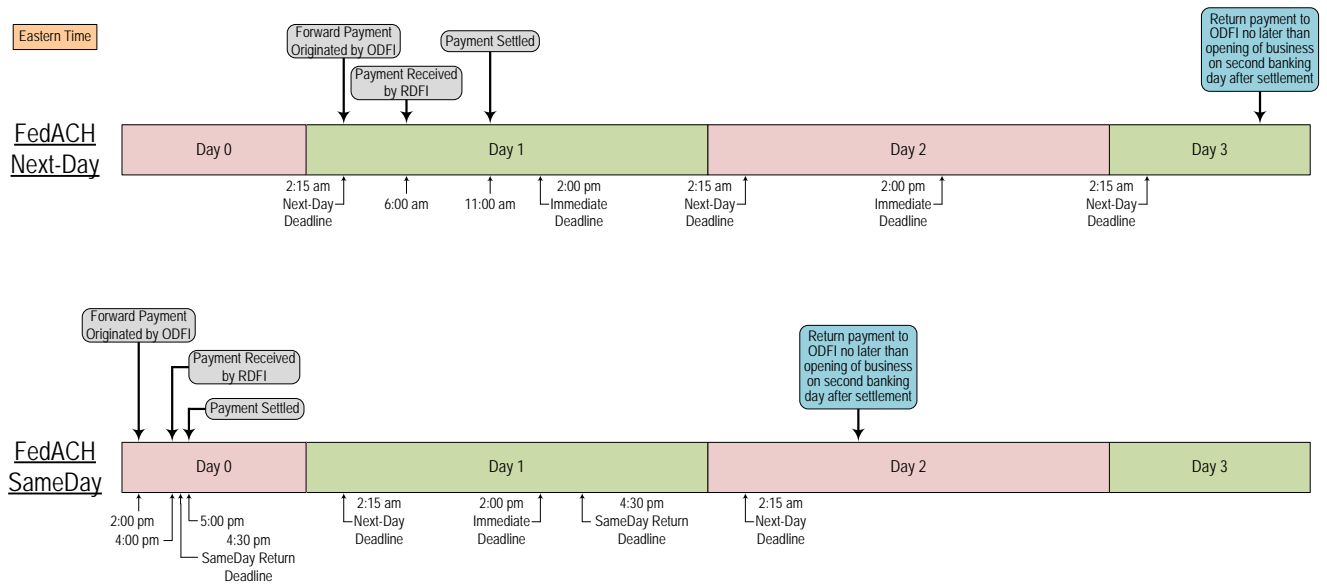
FedACH SameDay Service forward items must be sent between 2:15 am and 2:00 pm ET, delivery to RDFI is by 4:00 p.m. ET, and settlement is at 5:00 p.m. ET.



Return – Transmission, Delivery, and Settlement Schedule

To qualify for FedACH SameDay Return Service, the return of same-day forward items must be sent between 2:00 pm and 4:30 pm ET, delivery of the returns is by 5:00 p.m. ET, and settlement is at 5:30 p.m. ET. Non-qualifying returns will settle next-day.

RDFIs may, if they wish, return FedACH SameDay Service forward items by the above return deadline. Otherwise, current return deadline rules apply to both same-day and next-day forward payments.



Participant Roles

A DFI may select different roles for each of its RTNs participating in the service. For each participating RTN, a DFI must select one of the following roles.

ODFI-Only For the specified RTN, participant elects to originate, but not receive same-day forward payments. An ODFI-only participant may receive returned same-day forward payments using the FedACH SameDay Return Service.

RDFI-Only For the specified RTN, participant elects to receive, but not originate same-day forward payments. An RDFI-only participant may, if it wishes, return same-day forward payments using the FedACH SameDay Return Service.

ODFI and RDFI For the specified RTN, participant elects to both originate and receive same-day forward and return payments.

RDFI Participant Types

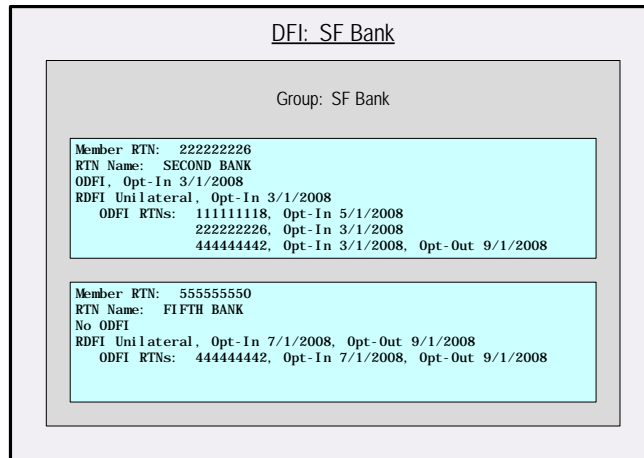
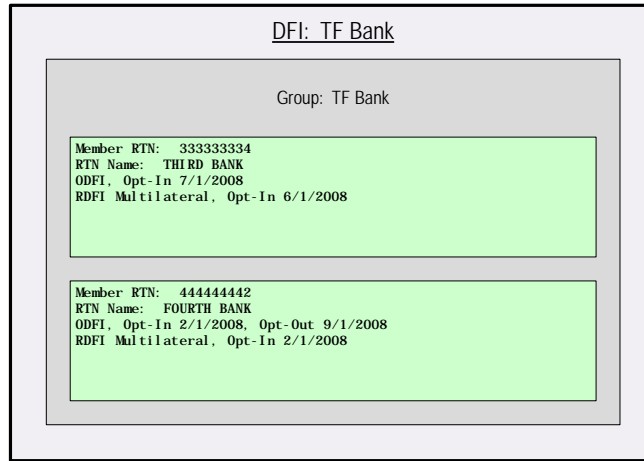
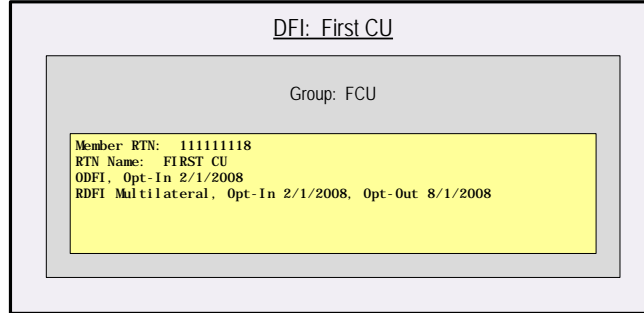
A DFI may select different roles for each of its RDFI RTNs participating in the service. For each participating RDFI RTN, a DFI must select one of the following types.

Multilateral For the specified RTN, participant elects to receive FedACH SameDay Service payments from all ODFI RTN participants.

Unilateral For the specified RTN, participant elects to receive FedACH SameDay Service payments from one or more ODFI RTN participants it specifies in the FedACH Participation Agreement. Originated payments from ODFI RTN participants not on the list will settle next-day.

Participant Groups and Members – Example

A participant group is a group of all participating RTNs for a DFI. Every RTN participant must be assigned as a member to one and only one group. Groups are defined in the FedACH Participation Agreement.



Unilateral/Multilateral Relationships for September 2008 – Example

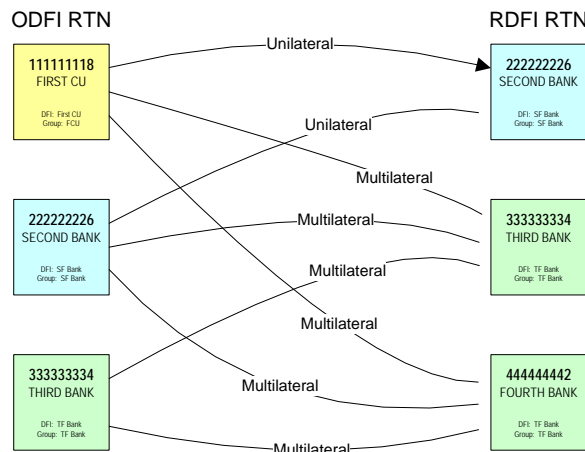
This example describes the FedACH SameDay Service unilateral/multilateral service that gives an RDFI participant the option to specify unilaterally or multilaterally from which ODFI participants it will allow receipt of FedACH SameDay Service forward payments. No restrictions apply to returning FedACH SameDay Service forward payments.

FedACH SameDay Service Participant Definitions					
DFI RTN	RTN Name	FedACH SameDay Service ODFI Participant	FedACH SameDay Service RDFI Participant	Unilateral/Multilateral Option	ODFI Partners
111111118	FIRST CU	Yes	No	N/A	
222222226	SECOND BANK	Yes	Yes	Unilateral	111111118 and 222222226
333333334	THIRD BANK	Yes	Yes	Multilateral	
444444442	FOURTH BANK	No	Yes	Multilateral	

As shown in the definition table above, DFI RTNs 111111118, 222222226, and 333333334 have signed up as ODFI participants. DFI RTNs 222222226, 333333334, and 444444442 have signed up as RDFI participants. For the RDFI participants, all have signed up for the multilateral option except for RDFI 222222226. RDFI 222222226 has unilaterally agreed to accept FedACH SameDay Service payments from ODFIs 111111118 and 222222226 only. RDFI participants 333333334 and 444444442 have selected the multilateral option which allows receiving FedACH SameDay Service payments from all ODFI participants. Note that RTN 444444442 cannot originate FedACH SameDay Service forward payments, including “on-us” payments to itself, because it has not signed up as an ODFI participant. No restrictions apply to RTN 444444442 returning FedACH SameDay Service forward payments. Additionally, RTN 111111118 cannot receive FedACH SameDay Service forward payments, including “on-us” payments from itself, because it has not signed up as an RDFI participant.

Using the above definitions, the following table and diagram shows all of the FedACH SameDay Service participant pairs that allow same-day settlement.

FedACH SameDay Service Participant Pairs	
Forward ODFI RTN Return RDFI RTN	Forward RDFI RTN Return ODFI RTN
ODFI RTN	RDFI RTN
111111118	222222226
111111118	333333334
111111118	444444442
222222226	222222226
222222226	333333334
222222226	444444442
333333334	333333334
333333334	444444442

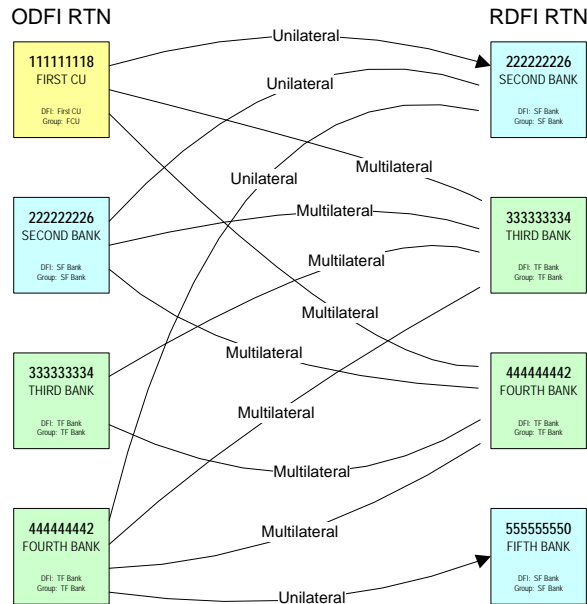


Unilateral/Multilateral Relationships for August 2008 – Example

The following reflects unilateral/multilateral relationships for August 2008.

FedACH SameDay Service Participant Definitions					
DFI RTN	RTN Name	FedACH SameDay Service ODFI Participant	FedACH SameDay Service RDFI Participant	Unilateral/Multilateral Option	ODFI Partners
111111118	FIRST CU	Yes	No	N/A	
222222226	SECOND BANK	Yes	Yes	Unilateral	111111118, 222222226, and 444444442
333333334	THIRD BANK	Yes	Yes	Multilateral	
444444442	FOURTH BANK	Yes	Yes	Multilateral	
555555550	FIFTH BANK	No	Yes	Unilateral	444444442

FedACH SameDay Service Participant Pairs	
Forward ODFI RTN Return RDFI RTN	Forward RDFI RTN Return ODFI RTN
ODFI RTN	RDFI RTN
111111118	222222226
111111118	333333334
111111118	444444442
222222226	222222226
222222226	333333334
222222226	444444442
333333334	333333334
333333334	444444442
444444442	222222226
444444442	333333334
444444442	444444442
444444442	555555550



Master Participant List Data Structure

(Used by FedACH Only, For Illustrative Purposes Only)

The following simplified tables reflect participant information shown on the previous pages. The tables do not reflect actual internal data structures used by FedACH Services.

Master ODFI Participant List		
ODFI RTN	Opt-In Date	Opt-Out Date
111111118	2/1/2008	
222222226	3/1/2008	
333333334	7/1/2008	
444444442	2/1/2008	9/1/2008

Master RDFI Participant List			
RDFI RTN	Multilateral/Unilateral	Opt-In Date	Opt-Out Date
111111118	Multilateral	2/1/2008	8/1/2008
222222226	Unilateral	3/1/2008	
333333334	Multilateral	6/1/2008	
444444442	Multilateral	2/1/2008	
555555550	Unilateral	7/1/2008	9/1/2008

Master RDFI Unilateral Participant List			
ODFI RTN	RDFI RTN	Opt-In Date	Opt-Out Date
111111118	222222226	5/1/2008	
222222226	222222226	3/1/2008	
444444442	222222226	3/1/2008	9/1/2008
444444442	555555550	7/1/2008	9/1/2008

Master Member Participant List	
Member RTN	Group
111111118	FCU
222222226	SF Bank
333333334	TF Bank
444444442	TF Bank
555555550	SF Bank

ACD (Existing Table)	
RTN	RTN Name
111111118	FIRST CU
222222226	SECOND BANK
333333334	THIRD BANK
444444442	FOURTH BANK
555555550	FIFTH BANK

Master Participant List Specification

(Excel Format)

The Master Participant List offers full information, in human-readable format, on every RTN participating in the FedACH SameDay Service. As the list is updated by FedACH Services, it is automatically posted on <http://www.frb services.org/>.

Using data shown earlier, the following reflects unilateral/multilateral relationships for September 2008.

fedach_FedACH SameDay Service_master_participant_list_september-2008_published_8-25-2008.xls

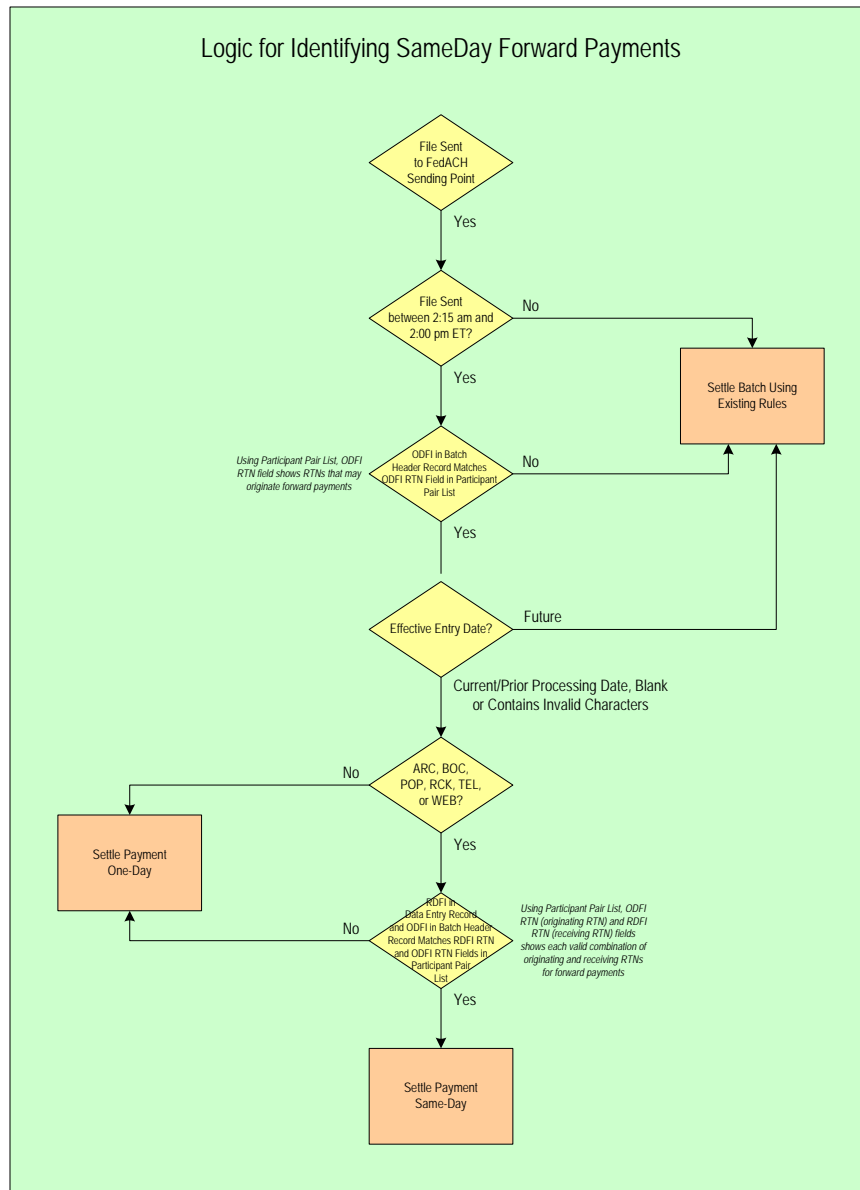
“DFI Participants” Tab

Same-Day ACH DFI Participant List September 2008, Published 8/25/2008									
RTN	RTN Name	Group	ODFI Participant	ODFI Opt-In Date	ODFI Opt-Out Date	RDFI Participant	Unilateral/Multilateral	RDFI Opt-In Date	RDFI Opt-Out Date
111111118	FIRST CU	FCU	Yes	2/1/2008		No	Multilateral	2/1/2008	8/1/2008
222222226	SECOND BANK	SF Bank	Yes	3/1/2008		Yes	Unilateral	3/1/2008	
333333334	THIRD BANK	TF Bank	Yes	7/1/2008		Yes	Multilateral	6/1/2008	
444444442	FOURTH BANK	TF Bank	No	2/1/2008	9/1/2008	Yes	Multilateral	2/1/2008	
555555550	FIFTH BANK	SF Bank				No	Unilateral	7/1/2008	9/1/2008

“RDFI Unilateral Participants” Tab

Same-Day ACH RDFI Unilateral Participant List September 2008, Published 8/25/2009							
RDFI RTN	RDFI RTN Name	RDFI Group	ODFI RTN	ODFI RTN Name	ODFI Group	Opt-In Date	Opt-Out Date
222222226	SECOND BANK	SF Bank	111111118	FIRST CU	FCU	5/1/2008	
222222226	SECOND BANK	SF Bank	222222226	SECOND BANK	SF Bank	3/1/2008	
222222226	SECOND BANK	SF Bank	444444442	FOURTH BANK	TF Bank	3/1/2008	9/1/2008
555555550	FIFTH BANK	SF Bank	444444442	FOURTH BANK	TF Bank	7/1/2008	9/1/2008

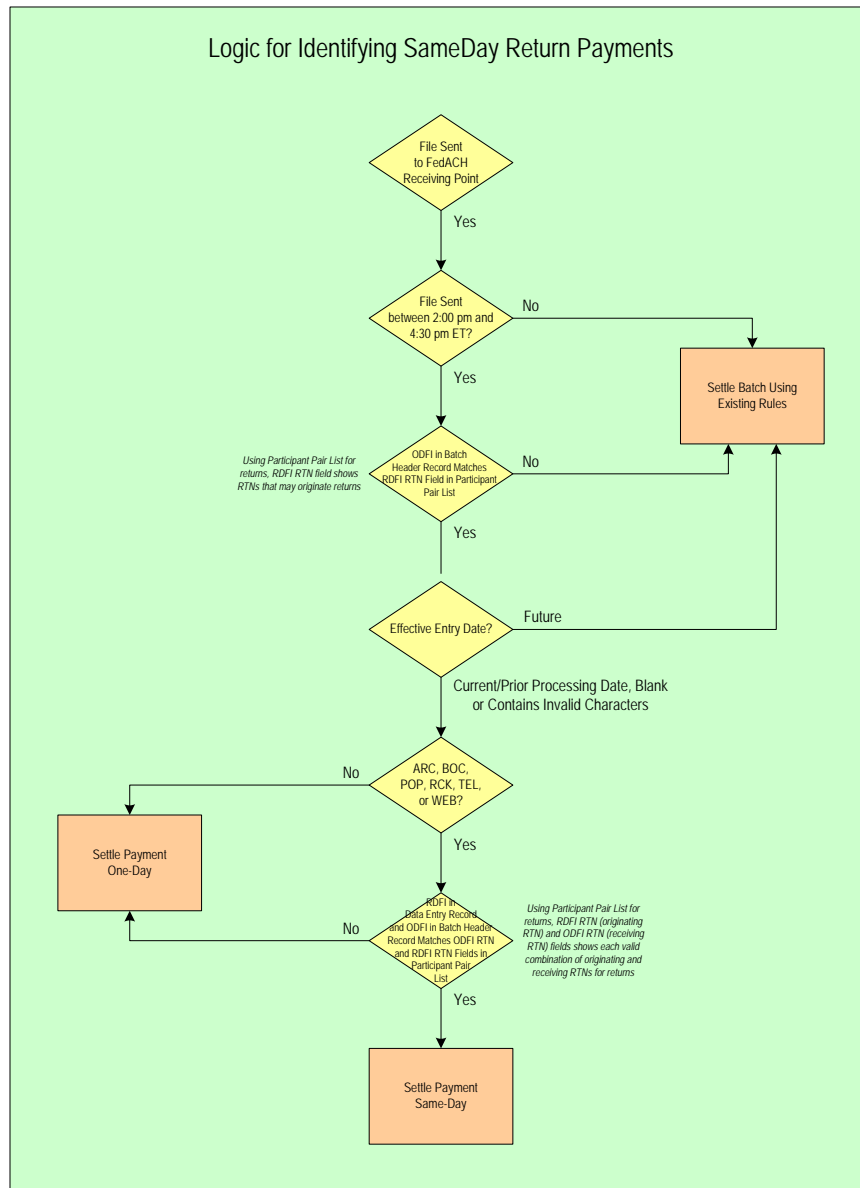
Logic for Identifying FedACH SameDay Service Forward Payments



Reversal of a Forward Payment:

A forward reversal originated by a FedACH SameDay Service participant settles same-day if it meets all the conditions shown above and is sent within the FedACH SameDay Service forward window. Otherwise, the reversal will settle using existing rules.

Logic for Identifying FedACH SameDay Service Return Payments



Reversal of a Return Payment:

A return reversal originated by a FedACH SameDay Service participant settles same-day if it meets all the conditions shown above and is sent within the FedACH SameDay Service return window. Otherwise, the reversal will settle using existing rules.

Output Files to Receiving Points

All FedACH SameDay Service returns will be delivered in a separate output file with the unique identifier AJ19. FedACH SameDay Service forward payments are included in existing output files. Forward payments in the output file that are settling same-day are identified using the Julian date field.

Currently, you may receive up to four output files per day (A-D), after signing up for FedACH SameDay Service, you could receive as many as two additional files per day (A-F).

Files are distributed as follows:

File	Description	Distributed Before
A	First distribution	1:00 pm ET
B	Immediate distribution	4:00 pm ET
C	AJ19 output file containing same-day returns originated between 2:00 pm and approximately 2:45 pm ET	4:00 pm ET
D	AJ19 output file containing same-day returns originated between approximately 2:45 pm and 4:30 pm ET	5:00 pm ET
E	Second to last distribution	10:00 pm ET
F	Last distribution	6:00 am ET

Settlement Advice Tran Codes for FedACH SameDay Service

Tran Code	Description	Comments
5724	SAME DAY ACH DEBITS ORIGINATED	Forward Payments
5725	SAME DAY ACH DEBITS RECEIVED	Forward Payments
5726	SAME DAY ACH CREDITS ORIGINATED	Reversal Payments
5727	SAME DAY ACH CREDITS RECEIVED	Reversal Payments
5728	SAME DAY ACH RETURNS	Return Payments

Account Holder
Immediate (FedACH SameDay Service) Settlement Advice
 (Mockup)

SVC FRB: I1	FEDERAL RESERVE SYSTEM AUTOMATED CLEARING HOUSE	1
ACCOUNT HOLDER ADVICE IMMEDIATE SETTLEMENT		
ABA #1111-1111-8		PROCESS DATE 08/16/08
ANYTOWN STATE BANK 2000 1 ST STREET BIG CITY, IA 52198 FAX 000000000000		
BIN NUMBER - 00000005		***** TEST ADVICE *****
DETAIL INFORMATION:		
ACTIVITY INFO	ABA/NODE	FILE SETTLEMENT DEBIT CREDIT ID DATE AMOUNT AMOUNT
ACTIVITY ORIGINATED		
I-C00005	0815X *	8/16 2,015.00
I-C00005	08151 *	8/16 60,105.00
SUMMARY ORIGINATED:		8/16 62,120.00
ACTIVITY RECEIVED		
I-C00005	0815B *	8/16 200,452.00
SUMMARY RECEIVED:		8/16 200,452.00
SUMMARY INFORMATION:		
TRAN CODE		
5724-SDAY DEBITS ORIGINATED	8/16	62,120.00
5725-SDAY DEBITS RECEIVED	8/16	200,452.00
* EFFECTIVE ENTRY DATE CHANGED		
***** END OF REPORT *****		

Account Holder
FedACH SameDay Service Return Settlement Advice
 (Mockup)

SVC FRB: I1	FEDERAL RESERVE SYSTEM AUTOMATED CLEARING HOUSE	1
ACCOUNT HOLDER ADVICE SAME DAY RETURN SETTLEMENT		
ABA #1111-1111-8		PROCESS DATE 08/16/08
ANYTOWN STATE BANK 2000 1 ST STREET BIG CITY, IA 52198 FAX 000000000000 BIN NUMBER - 00000005		
***** TEST ADVICE *****		
DETAIL INFORMATION:		
ACTIVITY INFO	FILE ID	SETTLEMENT DATE
ABA/NODE		DEBIT AMOUNT
		CREDIT AMOUNT
ACTIVITY ORIGINATED		
I-C00005 08162 *		8/16 112,005.00
SUMMARY ORIGINATED:		8/16 112,005.00
ACTIVITY RECEIVED		
I-C00005 0815C *		8/16 1,900.00
SUMMARY RECEIVED:		8/16 1,900.00
SUMMARY INFORMATION:		
TRAN CODE		
5728-SDAY RETURNS		8/16 1,900.00 112,005.00
* EFFECTIVE ENTRY DATE CHANGED		
***** END OF REPORT *****		

Correspondent/Master Account
Immediate (FedACH SameDay Service) Settlement Advice
 (Mockup)

SVC FRB: D1	FEDERAL RESERVE SYSTEM AUTOMATED CLEARING HOUSE	1	
CORRESPONDENT/MASTER ACCOUNT ADVICE IMMEDIATE SETTLEMENT			
ABA #2222-2222-6		PROCESS DATE 08/16/08	
NEW TOWN SETTLEMENT BANK			
00000			
FAX 000000000000			
BIN NUMBER -		***** TEST ADVICE *****	
	FILE SETTLEMENT DATE	DEBIT AMOUNT	CREDIT AMOUNT
RESPONDENT ACCOUNT #			
ABA #3333-3333-4	COMMUNITY BANK, NA		
SUMMARY ORIGINATED:	8/16	9.00	21.00
SUMMARY RECEIVED:	8/16	409.00	
SUMMARY INFORMATION:			
TRAN CODE			
5705-IMMEDIATE TRANSACTION	8/16	9.00	15.00
5724-SDAY DEBITS ORIGINATED			6.00
5725-SDAY DEBITS RECEIVED	8/16	409.00	

SVC FRB: D1	FEDERAL RESERVE SYSTEM AUTOMATED CLEARING HOUSE	2	
CORRESPONDENT/MASTER ACCOUNT ADVICE IMMEDIATE SETTLEMENT (CONTINUED)			
ABA #2222-2222-6		PROCESS DATE 08/16/08	
NEW TOWN SETTLEMENT BANK			
00000			
FAX 000000000000			
BIN NUMBER -		***** TEST ADVICE *****	
	SETTLEMENT DATE	DEBIT AMOUNT	CREDIT AMOUNT
SUMMARY CORRESPONDENT/MASTER:	8/16	418.00	21.00
* EFFECTIVE ENTRY DATE CHANGED			
***** END OF REPORT *****			

Correspondent/Master Account
FedACH SameDay Service Return Settlement Advice
(Mockup)

```
SVC FRB:  D1                FEDERAL RESERVE SYSTEM                1
                        AUTOMATED CLEARING HOUSE

                        CORRESPONDENT/MASTER ACCOUNT ADVICE
                        SAME DAY RETURN SETTLEMENT

ABA #2222-2222-6                PROCESS DATE 08/16/08

NEW TOWN SETTLEMENT BANK

    00000

FAX  0000000000000

BIN NUMBER      -                ***** TEST ADVICE *****

                        FILE SETTLEMENT      DEBIT      CREDIT
                        DATE                AMOUNT    AMOUNT

RESPONDENT ACCOUNT #
                        ABA #3333-3333-4  COMMUNITY BANK, NA

    SUMMARY RECEIVED:  8/16                55.00

SUMMARY INFORMATION:

TRAN
CODE

    5728-SDAY RETURNS  8/16                55.00

SUMMARY CORRESPONDENT/MASTER:
                        8/16                55.00

* EFFECTIVE ENTRY DATE CHANGED

                        ***** END OF REPORT *****
```

Respondent/Subaccount
Immediate (FedACH SameDay Service) Settlement Advice
 (Mockup)

SVC FRB: A1	FEDERAL RESERVE SYSTEM AUTOMATED CLEARING HOUSE	1
RESPONDENT/SUBACCOUNT ADVICE IMMEDIATE SETTLEMENT		
ABA #3333-3333-4		PROCESS DATE 08/16/08
COMMUNITY BANK, NA MANAGER, ACH DEPARTMENT 500 FIRST AVE MYTOWN MA 15219		CORR/MASTER ACCT: ABA #2222-2222-6 NEW TOWN SETTLEMENT BANK
FAX 000000000000		
BIN NUMBER - 03100005		***** TEST ADVICE *****
DETAIL INFORMATION:		
ACTIVITY INFO	FILE SETTLEMENT ABA/NODE ID DATE	DEBIT CREDIT AMOUNT AMOUNT
ACTIVITY ORIGINATED		
2111-99990815A *	8/16	9.00 15.00
2111-99990815A *	8/16	6.00
SUMMARY ORIGINATED:	8/16	9.00 21.00
ACTIVITY RECEIVED		
2111-99990815A *	8/16	200.00
2111-99990815B *	8/16	209.00
SUMMARY RECEIVED:	8/16	409.00
SUMMARY INFORMATION:		
TRAN CODE		
5705-IMMEDIATE TRANSACTION	8/16	9.00 15.00
5724-SDAY DEBITS ORIGINATED		6.00
5725-SDAY DEBITS RECEIVED	8/16	409.00
* EFFECTIVE ENTRY DATE CHANGED		
***** END OF REPORT *****		

Respondent/Subaccount
FedACH SameDay Service Return Settlement Advice
 (Mockup)

SVC FRB: A1	FEDERAL RESERVE SYSTEM AUTOMATED CLEARING HOUSE	1
RESPONDENT/SUBACCOUNT ADVICE SAME DAY RETURN SETTLEMENT		
ABA #3333-3333-4		PROCESS DATE 08/16/08
COMMUNITY BANK, NA MANAGER, ACH DEPARTMENT 500 FIRST AVE MYTOWN MA 15219		CORR/MASTER ACCT: ABA #2222-2222-6 NEW TOWN SETTLEMENT BANK
FAX 000000000000		
BIN NUMBER - 03100005		***** TEST ADVICE *****
DETAIL INFORMATION:		
ACTIVITY INFO	FILE SETTLEMENT ABA/NODE ID DATE	DEBIT CREDIT AMOUNT AMOUNT
ACTIVITY RECEIVED		
2111-99990815C *	8/16	55.00
SUMMARY RECEIVED:	8/16	55.00
SUMMARY INFORMATION:		
TRAN CODE		
5728-SDAY RETURNS	8/16	55.00
* EFFECTIVE ENTRY DATE CHANGED		
***** END OF REPORT *****		

FedACH SameDay Service Time Extension Practice

Customer-requested time extensions to the FedACH SameDay Service will not be granted. This applies to both the FedACH SameDay Service forward and FedACH SameDay Service return services.

The only circumstance where a time extension will be provided for the FedACH SameDay Service is when FedACH has operational problems. If deadlines are extended, FedACH will provide a 30 minute window between the final distribution of the FedACH SameDay Service forward delivery file and the deadline for transmitting FedACH SameDay Service returns.

Due to operational considerations, the FedACH SameDay Service transmission deadline will also be extended when the immediate return deposit deadline is extended. As is already the case, customer-requested time extensions for the immediate service will not always be granted.

Finally, FedACH SameDay Service customers will be encouraged to sign up for the ENS (Email Notification System) that generates a notification when the immediate deadline is extended. Messages are also posted on FedLine[®] Home.

Events that would cause the FedACH SameDay Service Participant List to become Stale

Opt-in and opt-out rules:

1. A DFI may only opt-in on a monthly cycle. Opt-in date will always be set to the first calendar day of the month.
2. A DFI will be encouraged to opt-out on a monthly cycle. Though not encouraged, a DFI may, if it insists, opt-out outside the monthly cycle. The day before the opt-out date is the last day the DFI is a FedACH SameDay Service participant.

Events necessitating participation changes:

Event	Description	Action by FedACH Central Operations Site (COS)	COS Action Completed Before	Opt-Out Date	Before Next Processing Day, Participant Lists Updated on FRBServices.org	ODFI Calculated Settlement Matches FedACH Settlement
1.0	ODFI RTN request to opt-out outside monthly cycle.	Opt-out ODFI RTN.	Close of business day	Next calendar day	Yes	Yes
1.1	RDFI RTN request to opt-out outside monthly cycle.	Opt-out RDFI RTN.	Close of business day	Next calendar day	Yes	Yes
2.0	ODFI RTN request "same day" immediate removal of FedACH sending point. ODFI RTN adds or retains sending point at another ACH operator.	Opt-out ODFI RTN.	Close of business day	Next calendar day	Yes	No
2.1	ODFI RTN request "next day" removal of FedACH sending point. ODFI RTN adds or retains sending point at another ACH operator.	Opt-out ODFI RTN.	Close of business day	Next calendar day	Yes	Yes
3.0	RDFI RTN request "same day" immediate removal of FedACH receiving point. RDFI RTN adds or retains receiving point at another ACH operator.	Opt-out RDFI RTN.	Close of business day	Next calendar day	Yes	No
3.1	RDFI RTN request "next day" removal of FedACH receiving point. RDFI RTN adds or retains receiving point at another ACH operator.	Opt-out RDFI RTN.	Close of business day	Next calendar day	Yes	Yes
4.0	RTN is declared obsolete or retired by DFI.	Opt-out ODFI and RDFI RTN.	Close of business day	Next calendar day	Yes	Yes
5.0	DFI "fails" during business day and commercial payments are blocked.	Opt-out all participating ODFI and RDFI RTNs. Settlement is unwound.	Close of business day	Current business day	Yes	No
5.1	DFI "fails" after close of business day (local time) and commercial payments are blocked.	Opt-out all participating ODFI and RDFI RTNs. Settlement is unwound.	Close of business day	Current business day	Yes	No
6.0	DFI fails and is acquired by a surviving DFI.	Acquiring DFI continues FedACH SameDay Service participation. DFI may want to reassign FedACH SameDay Service participant RTNs into one group.	No action (Close of business day for group reassignment)	No change	No (Yes for group reassignment)	Yes

Events that would cause the FedACH SameDay Service Participant List to become Stale

(Continued)

Event	Description	Action by FedACH Central Operations Site (COS)	COS Action Completed Before	Opt-Out Date	Before Next Processing Day, Participant Lists Updated on FRBServices.org	ODFI Calculated Settlement Matches FedACH Settlement
7.0	DFI is merged into another DFI.	Merged DFI will be offered two options for <u>each</u> participating RTN. <u>Option 1</u> DFI cancels FedACH SameDay Service. Opt-out ODFI and RDFI RTN. <u>Option 2 (default)</u> DFI continues FedACH SameDay Service participation. DFI may want to reassign FedACH SameDay Service participant RTNs into one group.	Close of business day No action (Close of business day for group reassignment)	Next calendar day No change	Yes No (Yes for group reassignment)	Yes Yes

FedACH SameDay Service Fee Schedule

(Subject to Change)

As shown below, FedACH SameDay Service transaction fees are limited to item origination and addenda origination at \$0.006 and \$0.0026, respectively. Item/addenda receipt and all returns using the optional FedACH SameDay Service return service are free of transaction charges.

Payment Type	Per Item	Per Addenda
ODFI Forward	\$0.0060 (6.0 mils)	\$0.0026 (2.6 mils)
ODFI Return	Free	Free
RDFI Forward	Free	Free
RDFI Return	Free	Free

- The above fee schedule is achieved by applying surcharges and discounts to existing origination/receipt transaction fees for forward and return payments.

Billing Code	Description	Type	Fee	Applied to Billing Code
57600	Item in small file – FedACH SameDay Service forward origination	Surcharge	\$0.0030 (3.0 mils)	57201
57601	Item in large file – FedACH SameDay Service forward origination	Surcharge	\$0.0035 (3.5 mils)	57211
57602	Addenda record – FedACH SameDay Service forward origination	Surcharge	\$0.0013 (1.3 mils)	57219
57603	Item in small file – FedACH SameDay Service return origination	Discount	\$0.0030 (3.0 mils)	57205
57604	Item in large file – FedACH SameDay Service return origination	Discount	\$0.0025 (2.5 mils)	57215
57608	Addenda record – FedACH SameDay Service return origination	Discount	\$0.0013 (1.3 mils)	57219
57605	Item – FedACH SameDay Service forward receipt	Discount	\$0.0025 (2.5 mils)	57220
57606	Addenda record – FedACH SameDay Service forward receipt	Discount	\$0.0013 (1.3 mils)	57222
57607	Item – FedACH SameDay Service return receipt	Discount	\$0.0025 (2.5 mils)	57221
57609	Addenda record – FedACH SameDay Service return receipt	Discount	\$0.0013 (1.3 mils)	57222

- Only WEB payments have an optional addenda record. Historically, less than one percent of WEB payments carry an addenda record.
- No fee differentiation is made between same-day payments in small and large files.
- Same-day forward payments are subject to origination and receipt only minimum fees.
- Same-day forward receipt volume does not qualify for volume-based forward receipt discounting.